



# PREMIERS ROOM

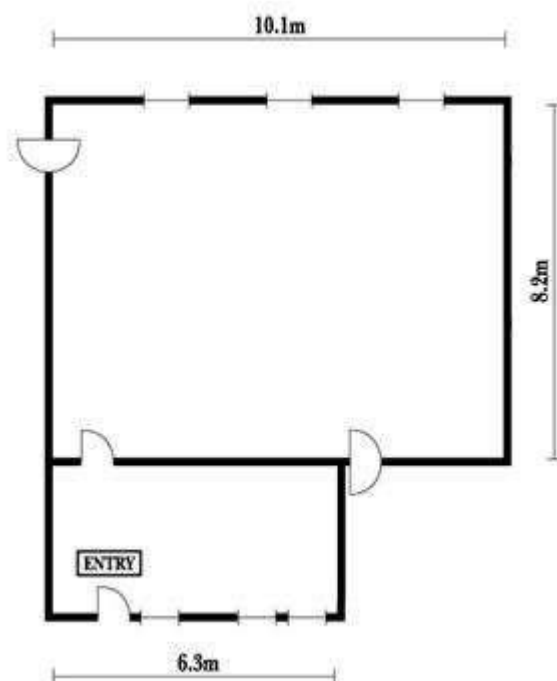
## Room Details

Location: Level 2

Dimension: 10.1m x 8.2m  
(82.6 sq mtrs)

Ceiling height: 3.8m

Natural light: Yes



## Set up Styles & Maximum Capacities

Classroom: 27

Banquet: 40

Cabaret: 32

Cocktail/Reception: 50

Theatre: 50

Hollow Square: 24

U-Shape: 18

Boardroom: 18

